

Name		Roll Number	
------	--	-------------	--



**INDIAN SCHOOL MUSCAT
MIDDLE SECTION
FIRST TERM EXAMINATION 2018-19**



SUBJECT - SCIENCE

Code: MXSC19

CLASS: VI

Time Allotted: 2 ½ Hrs.

19.09.2018

Max . Marks: 80

General Instructions.

1. The question paper comprises of **two Sections, A and B**. You have to attempt both the sections.
2. **All** questions are **compulsory**.
3. **All answers should be written in the answer sheet provided.**

SECTION A

1.Fill in the blanks.

- a. _____gas does not support burning and cause suffocation if present in 1
abundant.
- b. No rainfall for a year or more may lead to _____ in that region. 1
- c. The image formed by a mirror is due to the _____ of light. 1
- d. A _____ is a device that is used to find directions using directional properties of 1
magnets.
- e. Water and milk are _____ liquids. 1
- f. The iron rim of a wooden wheel is made slightly _____ than the wheel. 1

2. Choose the correct answer.

- a. A process in which liquid changes into vapour is called _____. 1
(a) contraction (b) evaporation (c) melting (d) freezing
- b. Transparent materials allow the light to pass through them. 1
(a) partially (b) completely (c) sometimes only (d) not at all
- c. The two ends of the magnet are called _____. 1
(a) strength (b) poles (c) north (d) south
- d. Grape is an example of _____. 1
(a) herb (b) shrub (c) creeper (d) climber

- e. The water in oceans cannot be used because it is _____. 1
 (a) salty (b) harmful (c) toxic (d) acidic
- f. Weather cock shows the direction of moving _____ of a place. 1
 (a) water (b) air (c) smoke (d) dust

3. State TRUE or FALSE.

- a. The presence of dust particles in air varies from place to place and from time to time. 1
- b. Evaporation takes place only in presence of sunlight. 1
- c. The moon is a non-luminous body. 1
- d. If a plant has leaves with reticulate venation, then its root will likely to be taproot. 1
- e. Things made of gold and aluminium has no luster. 1
- f. Making an aeroplane by cutting out of a paper is an irreversible change. 1

4. Give ONE word / term for the following.

- a. The substances which dissolves in water completely. 1
- b. The process that takes place when solid cools. 1
- c. The process by which leaves loss water in the form of vapour from the stomata. 1
- d. The dark patch formed due to obstruction of light rays by an opaque object. 1
- e. An artificial magnet. 1
- f. The constant circulation of water between ocean and land. 1
- g. The layer of air that surrounds the earth. 1

SECTION B

Questions 5 to 19 carry 1 mark each.

- 5 Give **two** uses of a wind mill. 1
- 6 Give reason: Cooking of food is an irreversible change. 1
- 7 Name **two** processes that show the interdependence of plants and animals. 1
- 8 What are creepers? 1
- 9 When a can of soft drink from a refrigerator is kept outside, we can notice droplets of water appearing on the can. Why? 1
- 10 Which is harder – sponge or iron? 1
- 11 Classify the following objects as luminous **OR** non- luminous 1
 (a) a mirror (b) a piece of red hot iron.
- 12 Name **two** gases that dissolve in water. 1

- | | | |
|----|--|---|
| 13 | Write any two functions of roots found in plants. | 1 |
| 14 | How is a shadow formed? | 1 |
| 15 | In which direction does a suspended magnet come to rest? | 1 |
| 16 | Write two ways by which a magnet can be demagnetized. | 1 |
| 17 | Give two uses of oxygen. | 1 |
| 18 | How is ground water replenished under the earth's surface? | 1 |
| 19 | Why do earthworms come out of the soil during heavy rains? | 1 |

Questions 20 to 29 carry 2 marks each.

- | | | |
|----|--|---|
| 20 | Burning of candle involves two changes – <i>burning of candle wick and melting of wax.</i> | 2 |
| | Classify the changes which <i>can be reversed or cannot be reversed</i> . Justify your answer. | |
| 21 | Why do some metals like iron or copper lose their shine/luster after sometime? | 2 |
| 22 | Distinguish between magnetic materials and non-magnetic materials with examples. | 2 |
| 23 | State the main functions of the stem of a plant. | 2 |
| 24 | What are opaque objects? Give two examples. | 2 |
| 25 | What are two main techniques of rainwater harvesting? | 2 |
| 26 | What are the necessary conditions for a shadow to be formed? | 2 |
| 27 | State two properties for each which can be used to distinguish: Glass and Wood | 2 |
| 28 | Observe the diagrams given below and answer the following. | 2 |

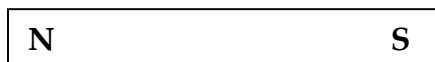


Figure (a)

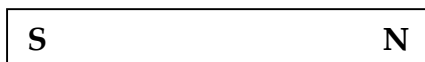


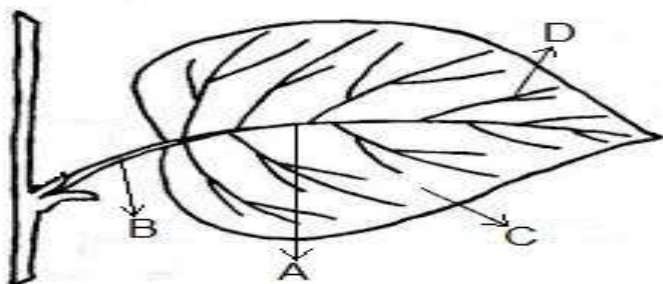
Figure (b)

Identify the resulting action between the magnets in

- (i) Figure (a) (ii) Figure (b)

29 Observe the following figure of a leaf and label the parts marked as **A, B, C and D**

2



Questions 30 to 34 carry 3 marks each.

30 How can iron blade in tools be fixed to the wooden handle? 3

31 (i) What is pin-hole camera? 3

(ii) What is the principle of the working of a pin-hole camera?

(iii) What are the characteristics of the image formed by a pin-hole camera?

32 Explain how too much rain can affect the lives of people, animals and plants. 3

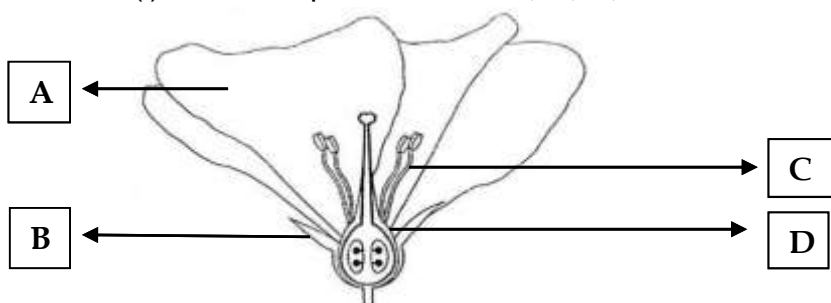
33 (i) Draw a pie-chart showing the composition of air by volume. 3

(ii) Why do you think, policeman wear masks?

34 What are the ways of storing a bar magnet and a horse-shoe magnet? 3

Questions 35 carries 5 marks.

35 (i) Label the parts marked **A, B, C, and D** in the diagram given below. 5



(ii) Name the different parts of **C**.

(iii) Name the different parts of **D**.

(iv) Write **one** function of flower?

End of the Question Paper.